

NOTICE OF MEETING

Meeting	Executive Member for Education and Skills Decision Day
Date and Time	Wednesday, 18th September, 2019 at 2.00 pm
Place	Chute Room - HCC
Enquiries to	members.services@hants.gov.uk

John Coughlan CBE
Chief Executive
The Castle, Winchester SO23 8UJ

FILMING AND BROADCAST NOTIFICATION

This meeting may be recorded and broadcast live on the County Council's website. The meeting may also be recorded and broadcast by the press and members of the public – please see the Filming Protocol available on the County Council's website.

AGENDA

KEY DECISIONS

1. TESTBOURNE COMMUNITY SCHOOL (Pages 3 - 16)

To consider a report of the Director of Culture, Communities and Business Services regarding Testbourne Community School.

NON KEY DECISIONS

2. APPOINTMENTS TO OUTSIDE BODIES (Pages 17 - 18)

To consider a report of the Director of Transformation and Governance – Corporate Services regarding an appointment to an Outside Body.

ABOUT THIS AGENDA:

On request, this agenda can be provided in alternative versions (such as large print, Braille or audio) and in alternative languages.

ABOUT THIS MEETING:

The press and public are welcome to attend the public sessions of the meeting. If you have any particular requirements, for example if you require wheelchair access, please contact members.services@hants.gov.uk for assistance.

County Councillors attending as appointed members of this Committee or by virtue of Standing Order 18.5; or with the concurrence of the Chairman in connection with their duties as members of the Council or as a local County Councillor qualify for travelling expenses.

HAMPSHIRE COUNTY COUNCIL

Decision Report

Decision Maker:	Executive Member for Education and Skills
Date:	18 September 2019
Title:	Testbourne Community School
Report From:	Director of Culture, Communities and Business Services

Contact names: Steve Clow and Bob Wallbridge

Tel: 01962 847858
01962 847894

Email: steve.clow@hants.gov.uk
bob.wallbridge@hants.gov.uk

Purpose of this Report

- 1 The purpose of this report is to seek approval from the Executive Member for Education and Skills, to the project proposals below.

Recommendations

- 2 That the Executive Member for Education and Skills, gives approval to the project proposals for the internal alterations and external recladding of the existing two storey SCOLA System built teaching block at Testbourne Community School in Whitchurch, at an estimated total cost of £3,150,000.

Executive Summary

- 3 The project comprises proposals for the internal alterations and external recladding of the existing two storey SCOLA teaching block at Testbourne Community School in Whitchurch.

Scope of Work

- 3 Testbourne Community School is a mixed, comprehensive school for pupils aged 11- 16. It is proposed that the existing system built SCOLA two storey block is reclad along with alterations to the existing internal accommodation. Temporary classrooms will be installed on site to facilitate the project and ensure the school can to continue to teach a full curriculum.

Contextual information

- 5 The SCOLA block is located to the south of the original school building. The block was constructed in 1970 using the SCOLA steel frame construction system. The recladding works are proposed as a number of the building components are reaching the end of their useful life. The works will significantly improve the building performance and the quality of the internal environment and comfort in the teaching spaces.
- 6 The internal alterations will alter the location, size and configuration of a number of the teaching and ancillary spaces to better suit the requirements of the curriculum and the needs of the pupils.

Finance

- 7 Capital Expenditure:

The Capital Expenditure has already been approved; the following tables outline the breakdown of its distribution across the project:

Capital Expenditure	Current Estimate £'000	Capital Programme £'000
Buildings	2,704	2,704
Fees	446	446
Total	3,150	3,150

- 8 Sources of Funding:

Financial Provision for Total Scheme	Buildings £'000	Fees £'000	Total Cost £'000
1. From Own Resources			
a) Capital Programme (as above)	558	92	650
b) P&R School Condition Allocation (SCA)	2,146	354	2,500
Total	2,704	446	3,150

- i. *Building Cost:*

Due to the nature of the project a full cost analysis is not appropriate in this circumstance. Gross cost excluding modular, fees, ICT and loose Furniture and Equipment is £837/m2

ii. Furniture & Equipment:

Included in the above figures is an allocation of approximately £100,000 for the provision of all loose furniture, fittings, equipment and I.T. (inclusive of fees).

iii. School Balances:

The school has the following level of balances:

Published revenue balance as at 31 March 2019: £49,541.72

Devolved capital as at 31 March 2019 : £78,670.94

Revenue Issues:

iv. Overview of Revenue Implications:

	(a) Employees £'000	(b) Other £'000	(a+b) *Net Current Expenditure £'000	(c) Capital Charges £'000	(a + b + c) Total Net Expenditure £'000
Revenue Implications Additional + / Reductions	0	0	0	173	173

Details of site and existing Infrastructure

- 9 Testbourne Community School is located off Micheldever Road, Whitchurch, Hampshire. The school entrance is located along the northern boundary on Micheldever Road.
- 10 The existing mains services and drainage infrastructure at the site will be sufficient to accommodate the project proposals.

Scope of the Project

- 11 The proposed works for Testbourne Community School will include:
 - Replacement of the existing single glazed windows, cladding and brickwork and rendered panels with a new thermally insulated and double-glazed aluminium cladding system.
 - New roof covering including new thermal insulation.

- Internal refurbishment and alterations to provide modern, fit for purpose teaching and ancillary spaces that meet the needs of the school curriculum and pupils.
- Removal of asbestos and upgrade of physical fire precautions.

- 12 It is proposed that the works be procured through the Intermediate Construction Framework as part of a competitive tendering process.
- 13 It is anticipated that works will commence on site during Spring 2020 and complete in Summer 2021.

External Works

- 14 The external landscape proposals will include local adjustments to external landscape to reflect relocated external door positions in order to maintain suitable access to the building.

Planning

- 15 A planning application was submitted in August 2019.

Building Management

- 16 The existing building management arrangements will remain in place.

Professional Resources

- | | |
|---------------------------------------|--|
| 17 Building Surveying- | Culture, Communities & Business Services |
| Mechanical & Electrical Engineering - | Culture, Communities & Business Services |
| Structural Engineering - | Culture, Communities & Business Services |
| Quantity Surveying - | Culture, Communities & Business Services |
| Principal Designer - | Culture, Communities & Business Services |

Consultation and Equalities

- 18 The following have been consulted during the development of this project.
- Headteacher
 - School Governors
 - Children's Services
 - Executive Lead Member for Children's Services
 - Fire Officer
 - Access Officer
 - Planning Department
 - Ecology Officer

Risk & Impact Issues

Fire Risk Assessment

- 19 With respect to fire safety and property protection, the proposals have been risk assessed in line with the agreed Property Services procedures and confirmed that the provision of sprinklers is not required in this instance.

The proposals will meet the requirements of the Building Regulations (BB100 Fire Safety in Schools), including enhancements beyond minimum provision, and are consistent with current fire safety legislation, the partnership arrangement with Hampshire Fire and Rescue Services, and are in line with the County Council's policy to manage corporate risk.

The project proposals include the following fire safety and enhanced features:

Additional automatic fire detection with full (24/7) remote monitoring.

Reduced fire compartment sizes.

Consideration of secure by design principles including external lighting etc.

Health and Safety

- 20 Design risk assessments, pre-construction health & safety information and a Health & Safety File will be produced and initiated in accordance with the Construction Design and Management Regulations for the proposed scheme.
- 21 It is proposed that the contractor will access the school site by the main school entrance off Micheldever Road.
- 22 No deliveries or movements of vehicles will take place at the start or end of the school day, in order to avoid traffic conflict when pupils are arriving at or departing from the school.
- 23 The school site will remain in use during the construction period and local management arrangements will be put in place to manage the health and safety impact to all users.

Climate Change

- 24 The project will incorporate the following sustainability features:

A highly insulated building envelope including high performance windows, doors and roof lights to reduce energy consumption.

Energy efficient lighting and heating controls, each light fitting will be day-light linked with absence detection to ensure the minimum energy is used.

External lighting to provide safe access and emergency escape routes that will be carefully designed to prevent light pollution to avoid nuisance to residential properties.

Provision of good levels of day lighting to all teaching areas to reduce the need for artificial lighting and energy use.

It should be noted that the SCOLA block already includes Photovoltaic Solar Panels to the flat roof, these will be disconnected to allow the proposed works to take place and reconnected following completion of the proposed scheme.

The use of timber from sustainable sources.

REQUIRED CORPORATE AND LEGAL INFORMATION:

Links to the Strategic Plan

Hampshire maintains strong and sustainable economic growth and prosperity:	yes
People in Hampshire live safe, healthy and independent lives:	yes
People in Hampshire enjoy a rich and diverse environment:	yes
People in Hampshire enjoy being part of strong, inclusive communities:	yes

Other Significant Links

Links to previous Member decisions:	
<u>Title</u> Executive Member Policy & Resources Executive Member for Children’s Services & Young People	<u>Date</u> 25 April 2019 10 th July 2019

Section 100 D - Local Government Act 1972 - background documents

The following documents discuss facts or matters on which this report, or an important part of it, is based and have been relied upon to a material extent in the preparation of this report. (NB: the list excludes published works and any documents which disclose exempt or confidential information as defined in the Act.)

<u>Document</u>	<u>Location</u>
None	

EQUALITIES IMPACT ASSESSMENT:

1. Equality Duty

The County Council has a duty under Section 149 of the Equality Act 2010 ('the Act') to have due regard in the exercise of its functions to the need to:

- Eliminate discrimination, harassment and victimisation and any other conduct prohibited by or under the Act with regard to the protected characteristics as set out in section 4 of the Act (age, disability, gender reassignment, marriage and civil partnership, pregnancy and maternity, race, religion or belief, sex and sexual orientation);
- Advance equality of opportunity between persons who share a relevant protected characteristic within section 149(7) of the Act (age, disability, gender reassignment, pregnancy and maternity, race, religion or belief, sex and sexual orientation) and those who do not share it;
- Foster good relations between persons who share a relevant protected characteristic within section 149(7) of the Act (see above) and persons who do not share it.

Due regard in this context involves having due regard in particular to:

- The need to remove or minimise disadvantages suffered by persons sharing a relevant protected characteristic that are connected to that characteristic;
- Take steps to meet the needs of persons sharing a relevant protected characteristic that are different from the needs of persons who do not share it;
- Encourage persons sharing a relevant protected characteristic to participate in public life or in any other activity in which participation by such persons is disproportionately low.

2. Equalities Impact Assessment:

Please see below

Equality Impact Assessment



Hampshire
County Council

Testbourne Community School - Internal alterations and external recladding

Accountable officer: Glenn Parkinson

Email address: lily.corner@hants.gov.uk

Department: Children's Services

Date of
assessment: 06/08/2019

Description of current service/policy

Testbourne Community School is a mixed, comprehensive school for pupils aged 11- 16. It is proposed that the existing Second Consortium of Local Authorities (SCOLA) type two storey block is reclad along with alterations to the existing internal accommodation. The SCOLA block is located to the South of the original school building. The block was constructed in 1970 using the SCOLA 2 steel frame construction system. The recladding works are proposed as a number of the building components are reaching the end of their useful life.

Geographical impact: Basingstoke &
Deane

Description of proposed change

The project comprises proposals for the internal alterations and external recladding of the existing two storey SCOLA teaching block at Testbourne School, at an estimated total cost of £3,150,000. The internal alterations will alter the location, size and shape of a number of the teaching and ancillary spaces to better suit the requirements of the curriculum and the needs of the pupils.

Works are planned to be undertaken with no impact on the curriculum. The works will take place as part of a phased approach with pupils decanted from six classrooms at a time into three double modular classrooms which will be provided. Works will commence during Spring 2020 and complete in Summer 2021.

Impacts of the proposed change

This impact assessment covers Service users

Engagement and consultation

Has engagement or consultation been carried out? Yes

The following have been consulted during the development of this project:

Headteacher
School Governors
Children's Services
Executive Lead Member for Children's Services
Fire Officer
Access Officer
Planning Department
Ecology Officer

The impact on local residents will be highlighted as part of the planning application due for submission in late August 2019 with residents provided an opportunity to comment on the proposals. The proposed development is however located centrally on the School site and is not directly overlooked by adjoining properties.

Statutory considerations	Impact	Mitigation
Age: Neutral		
Disability: Neutral		
Sexual orientation: Neutral		
Race: Neutral		

Religion and belief: Neutral		
Gender reassignment: Neutral		
Gender: Neutral		
Marriage and civil partnership: Neutral		
Pregnancy and maternity: Neutral		
Other policy considerations	Impact	Mitigation
Poverty: Neutral		
Rurality: Neutral		

Neutrality statement (if all considerations have a neutral impact)

The project comprises proposals for the internal alterations and external recladding of the existing two storey SCOLA teaching block at Testbourne Community School. All statutory considerations have been considered and there is neutral impact to all groups mentioned above.

Any other information

FEEDBACK FROM CONSULTEES:**OTHER EXECUTIVE MEMBERS:**

Executive Member & Portfolio	Reason for Consultation	Date Consulted	Response:
Councillor Patricia Stallard, Executive Lead Member for Children's Services and Young People	Portfolio Holder		

OTHER FORMAL CONSULTEES:

Member/ Councillor	Reason for Consultation	Date Consulted	Response:
Councillor Tom Thacker Whitchurch and The Cleres	Local member	19 July 2019	Acknowledged

**Testbourne Community School
Whitchurch
SCOLA block reclad & internal alterations
Proposed Site & Building Plans**

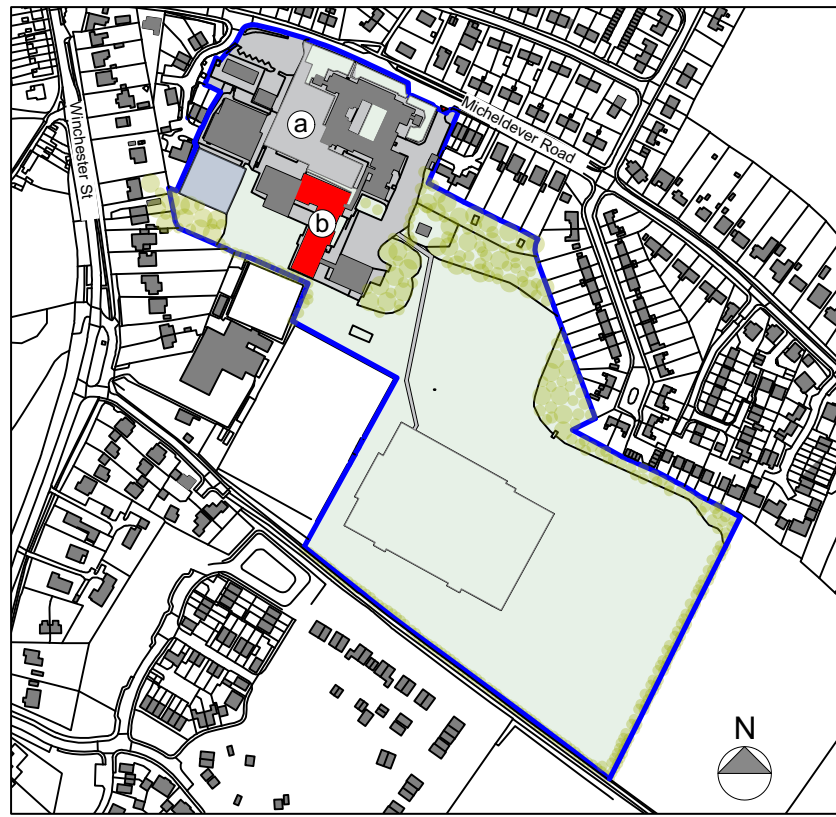
Key:

- a Testbourne Community School
- b SCOLA Block (To be reclad, remodelled & refurbished internally)

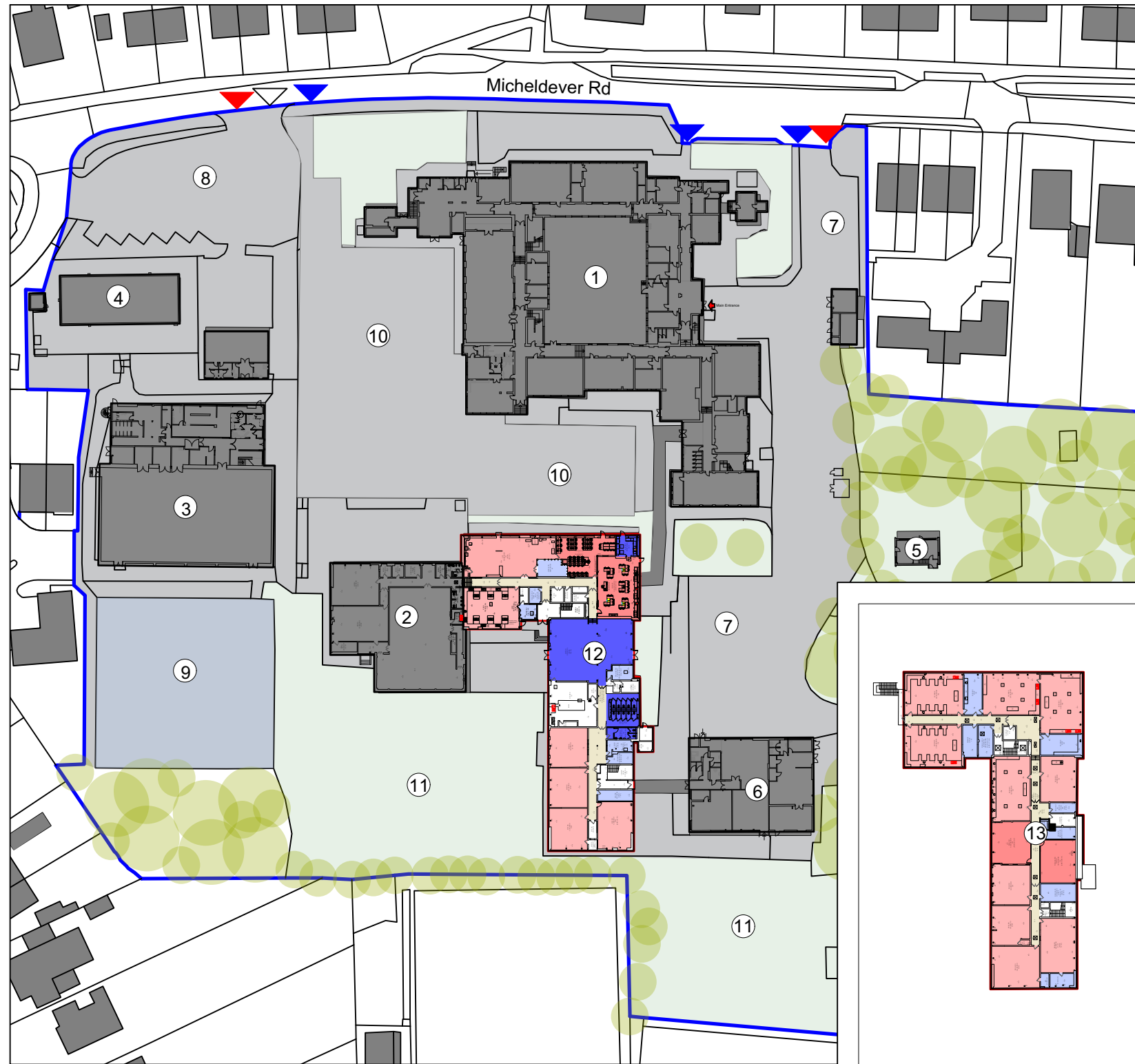
Proposed Site Plan:

- 1 Existing Main Block
- 2 Existing Drama Block
- 3 Existing Sports Hall & Changing Block
- 4 Existing Swimming Pool
- 5 Existing Caretakers House
- 6 Existing Community/ Kingfisher Block
- 7 Existing Car Park
- 8 Existing Bus Bay
- 9 Existing Tennis Courts
- 10 Existing Hard Play
- 11 Existing Soft Play/ Field
- 12 Proposed SCOLA Block Ground Floor
- 13 Proposed SCOLA Block First Floor

- Teaching - Heavy Refurbishment
- Teaching - Light Refurbishment
- Non-Teaching - Heavy Refurbishment
- Non-Teaching - Light Refurbishment
- Circulation - Light Refurbishment
- Site Boundary
- ▶ Pedestrian Access
- ▶ Vehicular Access
- ▶ Contractor Access



Existing Site Location Plan



Proposed Site Plan/ Ground Floor Plan

Proposed First Floor Plan



Example of a typical recladding scheme following completion



Typical Proposed Elevation

Please note: Brickwork/ render colour to be determined at a later date in conjunction with stakeholders

© Crown Copyright and database rights 2019. All rights reserved. HCC 100019180.

Project Appraisal
Not to Scale
C09174 - A.100_Rev C
August 2019

This page is intentionally left blank

HAMPSHIRE COUNTY COUNCIL

Decision Report

Decision Maker:	Executive Member for Education and Skills
Date:	18 September 2019
Title:	Appointments to Outside Bodies
Report From:	Director of Transformation and Governance – Corporate Services

Contact name: Jackie Taylor

Tel: 01962 847479

Email: jackie.taylor@hants.gov.uk

1. The Decision (PROPOSED):

- a) That, the Executive Member for Education and Skills makes an appointment to the Outside Body as detailed below. The term of office to expire at the County Council elections in May 2021.

(TO BE REPLACED)

Name of body and number of representatives	Previous appointment (for reference)	Proposed Appointment until May 2021
Hampshire Admission Forum (2)	Cllr Patricia Stallard Cllr Roger Huxstep	

2. Reason for the decision:

- 2.1. To maintain County Council representation on committees and bodies within the community.

3. Other options considered and rejected:

3.1. Not to make appointments, which would cease County Council representation.

4. Conflicts of interest:

4.1. Conflicts of interest declared by the decision-maker: None

4.2. Conflicts of interest declared by other Executive Members consulted: None

5. Dispensation granted by the Conduct Advisory Panel: None

6. Reason(s) for the matter being dealt with if urgent: Not applicable.

7. Statement from the Decision Maker:

Approved by:

Date:

18 September 2019

**Councillor Roz Chadd
Executive Member for Education and Skills**